

# XVM2 SERIES: Pressureless Valve Mount System



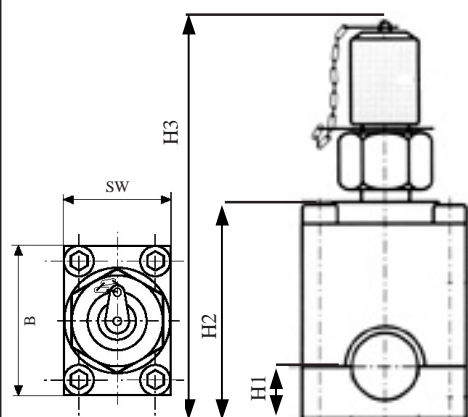
Predictive Maintenance Corporation Inc.  
 Toll Free: 1-800-461-8378  
 Phone: 514-383-6330  
 Fax: 514-383-5631  
 tribologik@pmaint.com  
 www.pmaint.com



•Quick •Convenient •Safe

- Add oil sampling and pressure measuring connections easily and safely.
- After installation connection can stand up to 9000psi (620 bar)
- Installation in only a few minutes.
- No special tools required.
- System is fully sealed off, no external contamination.
- No cutting open pipes or special adapters required.

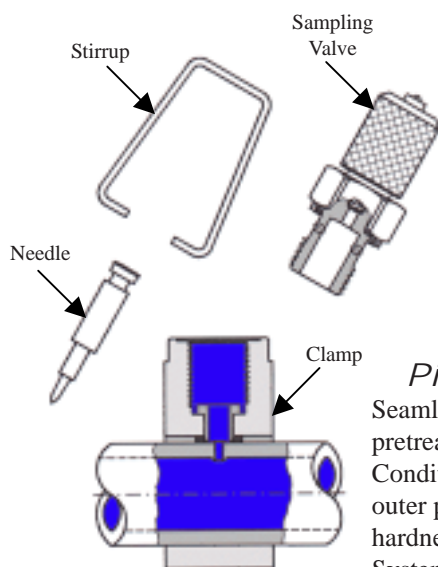
## Technical



Part #	H1	H2	H3	B	SW
XVM2-38	0.59" (15mm)	1.93" (49mm)	3.7" (94mm)	1.58" (40mm)	1.18" (30mm)
XVM2-12	0.59" (15mm)	1.97" (50mm)	3.74" (95mm)	1.58" (40mm)	1.18" (30mm)
XVM2-58	0.59" (15mm)	2.05" (52mm)	3.82" (97mm)	1.58" (40mm)	1.18" (30mm)
XVM2-34	0.79" (20mm)	2.3" (58.5mm)	4.08" (103.5mm)	1.97" (50mm)	1.18" (30mm)
XVM2-1	0.79" (20mm)	2.44" (62mm)	4.21" (107mm)	1.97" (50mm)	1.18" (30mm)
XVM2-114	1.18" (30mm)	2.95" (75mm)	4.72" (120mm)	2.56" (65mm)	1.18" (30mm)
XVM2-112	1.18" (30mm)	3.07" (78mm)	4.84" (123mm)	2.56" (65mm)	1.18" (30mm)

Above parts are for tubing only, for Schedule 80 & 160 pipe add P (i.e. VMP2-1)

Part #	H1	H2	H3	B	SW
XVM2-10LS	0.59" (15mm)	1.93" (49mm)	3.7" (94mm)	1.58" (40mm)	1.18" (30mm)
XVM2-12LS	0.59" (15mm)	1.97" (50mm)	3.74" (95mm)	1.58" (40mm)	1.18" (30mm)
XVM2-14S	0.59" (15mm)	2" (51mm)	3.78" (96mm)	1.58" (40mm)	1.18" (30mm)
XVM2-15L	0.59" (15mm)	2.03" (51.5mm)	3.8" (96.5mm)	1.58" (40mm)	1.18" (30mm)
XVM2-16S	0.59" (15mm)	2.05" (52mm)	3.82" (97mm)	1.58" (40mm)	1.18" (30mm)
XVM2-18L	0.59" (15mm)	2.09" (53mm)	3.86" (98mm)	1.58" (40mm)	1.18" (30mm)
XVM2-20S	0.79" (20mm)	2.32" (59mm)	4.09" (104mm)	1.97" (50mm)	1.18" (30mm)
XVM2-22L	0.79" (20mm)	2.36" (60mm)	4.13" (105mm)	1.97" (50mm)	1.18" (30mm)
XVM2-25S	0.79" (20mm)	2.42" (61.5mm)	4.19" (106.5mm)	1.97" (50mm)	1.18" (30mm)
XVM2-28L	0.79" (20mm)	2.48" (63mm)	4.25" (108mm)	1.97" (50mm)	1.18" (30mm)
XVM2-30S	1.18" (30mm)	2.91" (74mm)	4.69" (119mm)	2.56" (65mm)	1.18" (30mm)
XVM2-35L	1.18" (30mm)	3.01" (76.5mm)	4.78" (121.5mm)	2.56" (65mm)	1.18" (30mm)
XVM2-38S	1.18" (30mm)	3.07" (78mm)	4.84" (123mm)	2.56" (65mm)	1.18" (30mm)
XVM2-42L	1.18" (30mm)	3.15" (80mm)	4.92" (125mm)	2.56" (65mm)	1.18" (30mm)



## Pipe Requirements

Seamless drawn steel pipes made out of ST 35.4 material or pretreated basic material ST 37.4 according to DIN 1630. Condition when supplied NBA normalising, bright annealed) with outer pipe diameter tolerances according to DIN 2391, maximum hardness: HRB 75. Construction dimensions of the Valve Mount System are adapted to the pipes and tolerances according to DIN 2391.

## Materials

Component	Material
Housing	Steel
Sealing Shell	Steel
Seal	Viton™
Measuring Needle	Steel



- Check to see that the line is pressureless and the machine is shutoff and locked out.
- Pipe should be in good condition and have the proper diameter. **Do not use in air or gas pipes.**
- Pipe location should not add extra stress or tension on the valve mount.
- Remove paint and clean pipe so that the pipe is smooth, clean and dry.



- Clamp the valve mount to the pipe



- Screw down clamp bolts



- Using an open jawed wrench (without extension), screw in head joint in clockwise direction as far as it will go.



- Screw out the sampling valve and remove the spring plug, needle and pressure disk.



- The sampling valve is screwed back in and the system is ready for use.

### Order Numbers

Part #	Description
XVM2-38	Pressureless Valve Mount 3/8"
XVM2-12	Pressureless Valve Mount 1/2"
XVM2-58	Pressureless Valve Mount 5/8"
XVM2-34	Pressureless Valve Mount 3/4"
XVM2-1	Pressureless Valve Mount 1"
XVM2-114	Pressureless Valve Mount 1 1/4"
XVM2-112	Pressureless Valve Mount 1 1/2"

Part #	Description
XVM2-10LS	Pressureless Valve Mount 10 L&S
XVM2-12LS	Pressureless Valve Mount 12 L&S
XVM2-14S	Pressureless Valve Mount 14S
XVM2-15L	Pressureless Valve Mount 15L
XVM2-16S	Pressureless Valve Mount 16S
XVM2-18L	Pressureless Valve Mount 18L
XVM2-20S	Pressureless Valve Mount 20S
XVM2-22L	Pressureless Valve Mount 22L
XVM2-25S	Pressureless Valve Mount 25S
XVM2-28L	Pressureless Valve Mount 28L
XVM2-30S	Pressureless Valve Mount 30S
XVM2-35L	Pressureless Valve Mount 35L
XVM2-38S	Pressureless Valve Mount 38S
XVM2-42L	Pressureless Valve Mount 42L

See our website for sampling locations and instructions.  
[www.pmaint.com](http://www.pmaint.com)

**Predictive Maintenance Corporation**  
 8330 Decarie  
 Montreal, QC  
 H4P 2P5  
 CANADA

**Toll Free: 1-800-461-TEST(8378)**  
**Phone: (514) 383-6330**  
**Fax: (514) 383-5631**  
**Email: [tribologik@pmaint.com](mailto:tribologik@pmaint.com)**  
**Web: [www.pmaint.com](http://www.pmaint.com)**

